

# TECHNOLOGICAL PRODUCTS



TECHNICAL CONSULTANCY ACTIVITIES,  
RESEARCH AND ADVANCED SERVICES, S.L.



# DETACHABLE PAVEMENTS

## DEMOLITION IS NO LONGER NEEDED. THERE ARE ALTERNATIVE SOLUTIONS:

Our pavement are mainly characterized by their aesthetic finishing and their good structural operation, feasible for heavy traffic. In addition, they can be disassembled and replaced when it is required to repair facilities and to reurbanize.

We offer different formats, prefabricated ones or that for executing in situ, just in the same place where the paver will be placed.



The solutions finished in stone have a prize much lower than conventional solutions. Nowadays, we offer hexagonal solutions of 15 cm side and rectangular solutions of 40 cm side. They are executed in situ.

The design possibilities are extremely wide





# DETACHABLE PAVEMENTS

Our prefabricated solutions allow a really quick assembling. Nowadays, we have available the **rectangular format of 33.3 x 33.33 cm** and the **hexagonal one of 20 cm side**. This solution can support the highest level of traffic. An interesting range of colours are also available.

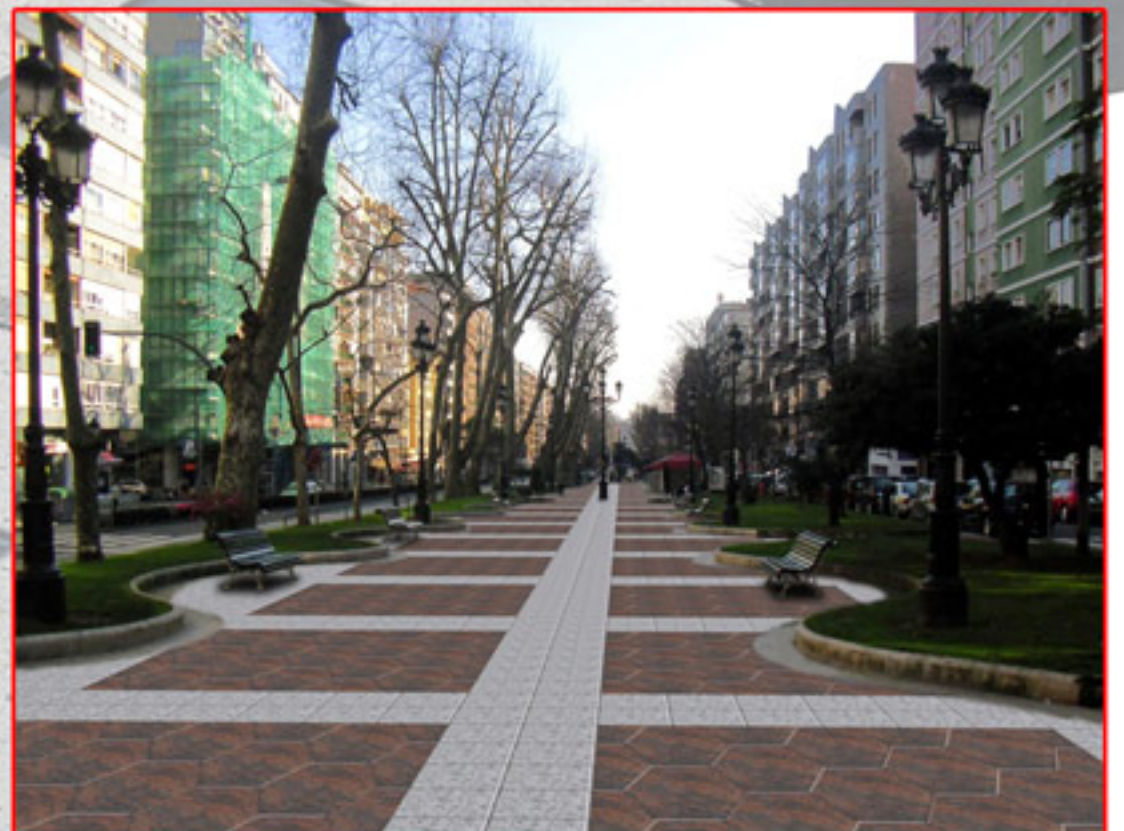




# DETACHABLE PAVEMENTS



**Intelligent pavement:** we are currently developing the introduction of WiFi systems and radio frequency tags fed by our solar tiles. The application are aimed to promote interactive marketing and to provide the user with information.

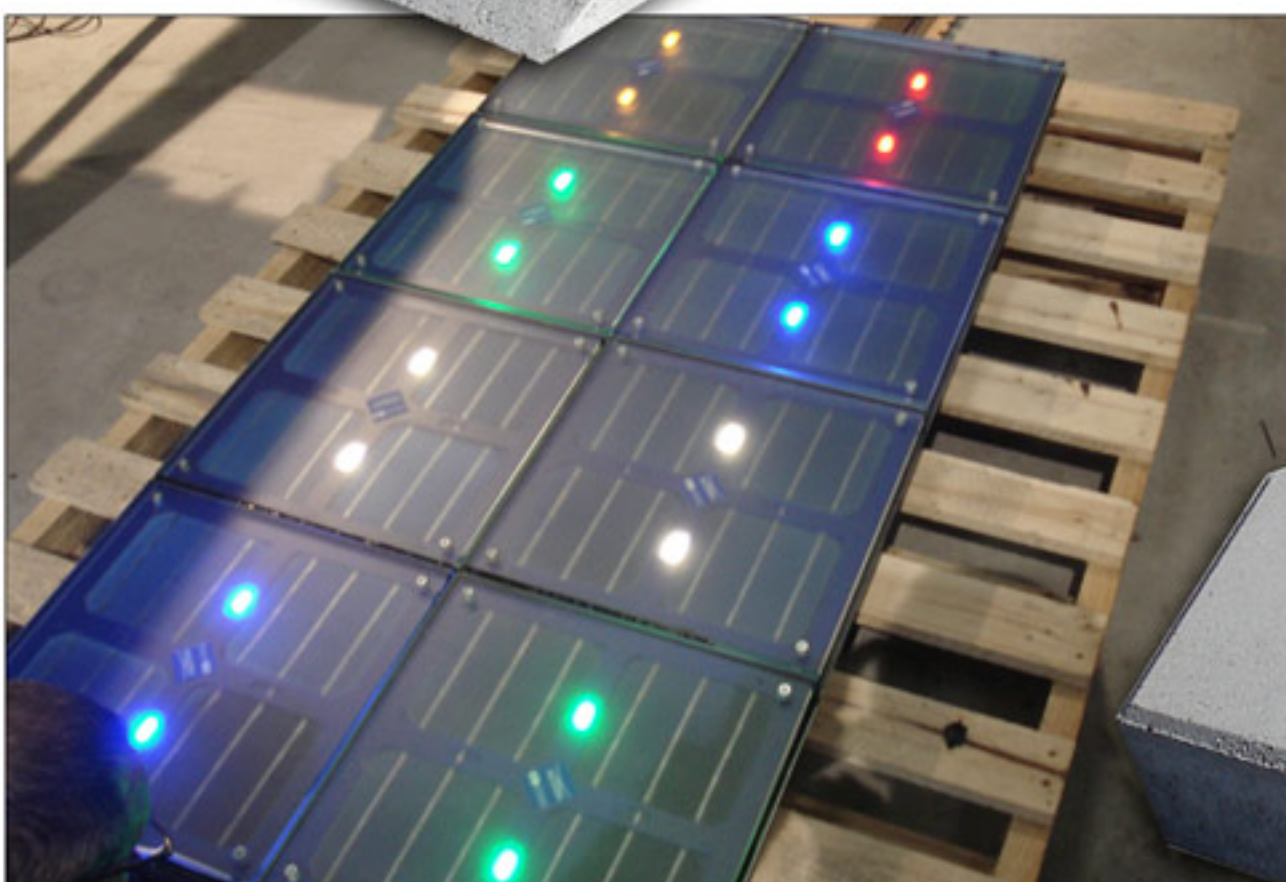
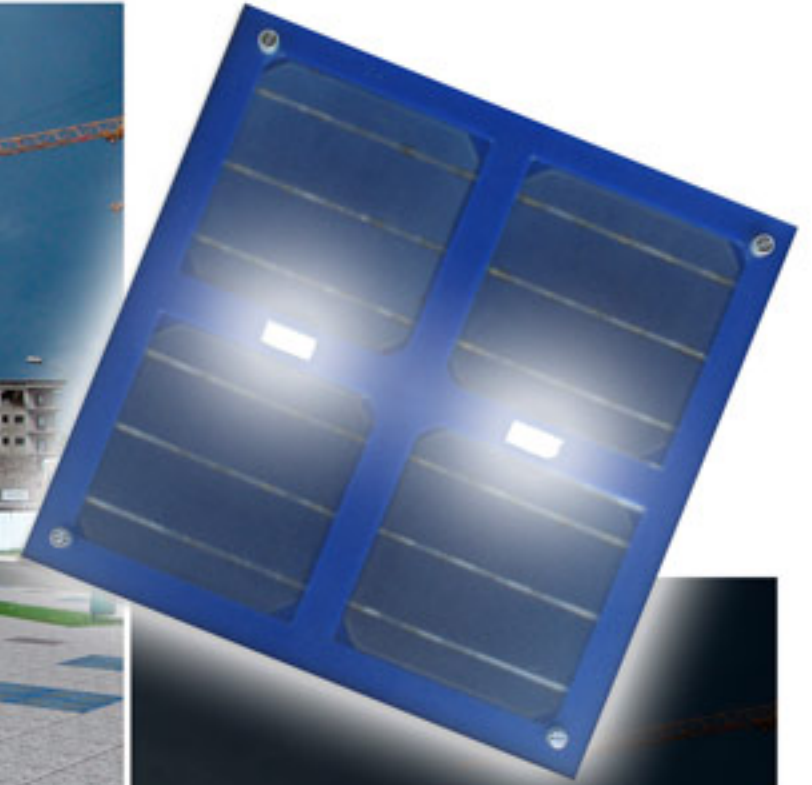




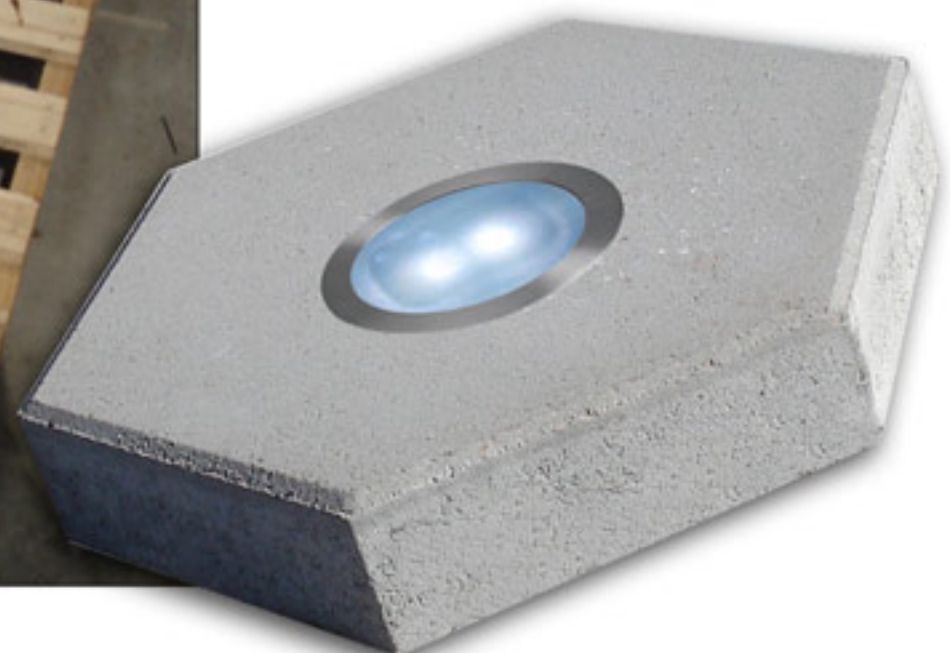
# SOLAR TILE

## CAN PAVEMENTS PRODUCE THEIR OWN NIGHT LIGHT?:

The Economic Interest Group **EPD Project** got it. These solar tiles can be used in any urban or private areas. They involve an important innovation to the traditional concept of pavement. We have available two formats: permanent light and intermittent light. The latter can be used for signalling.



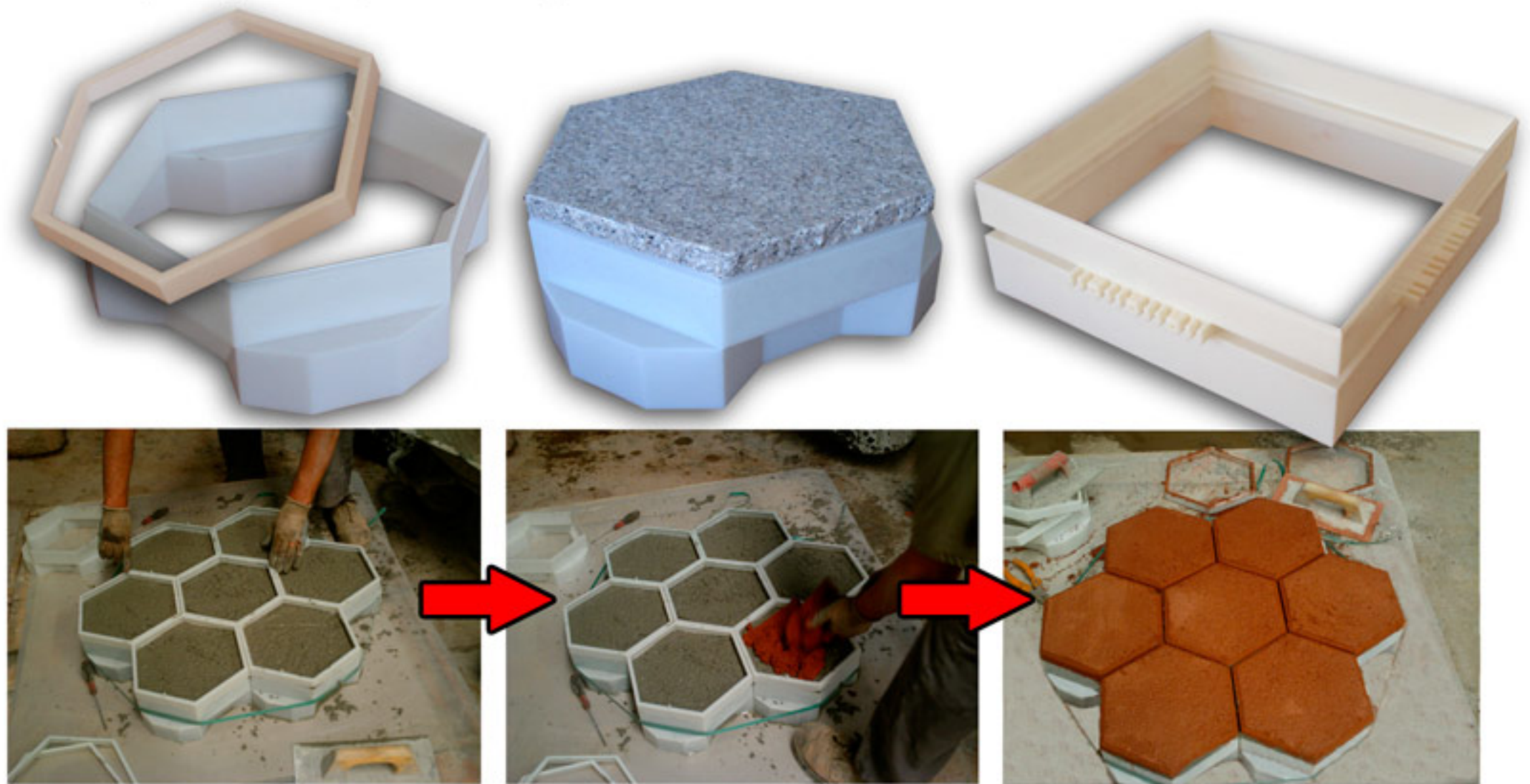
In addition, our solar tile of **40 x 40 cm** makes the pavement into a highly-active energy element since it can be used for public lighting, home service and network connection.





## DETACHABLE PAVEMENTS IN SITU

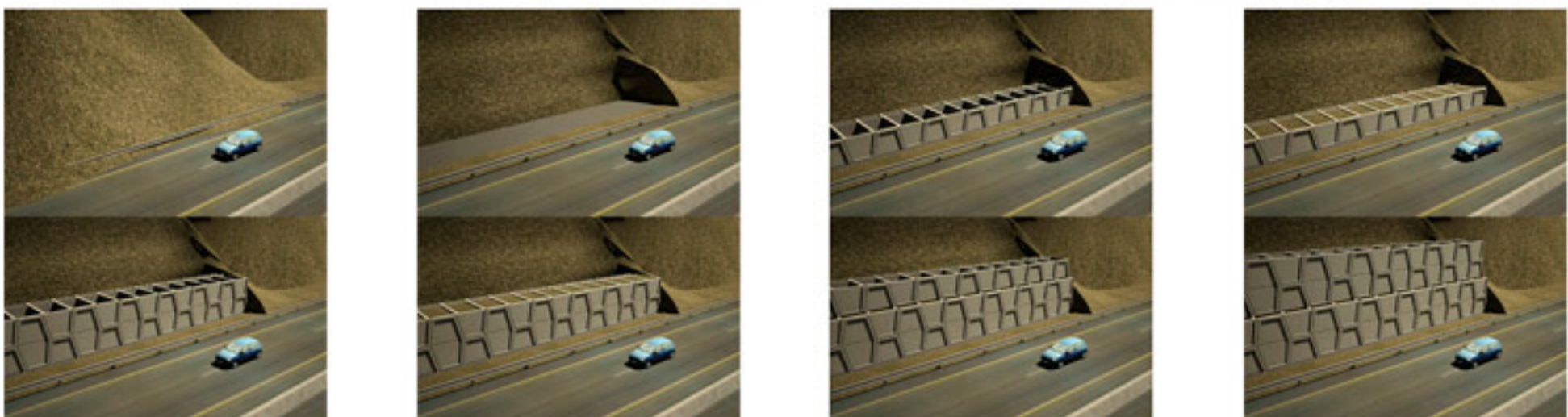
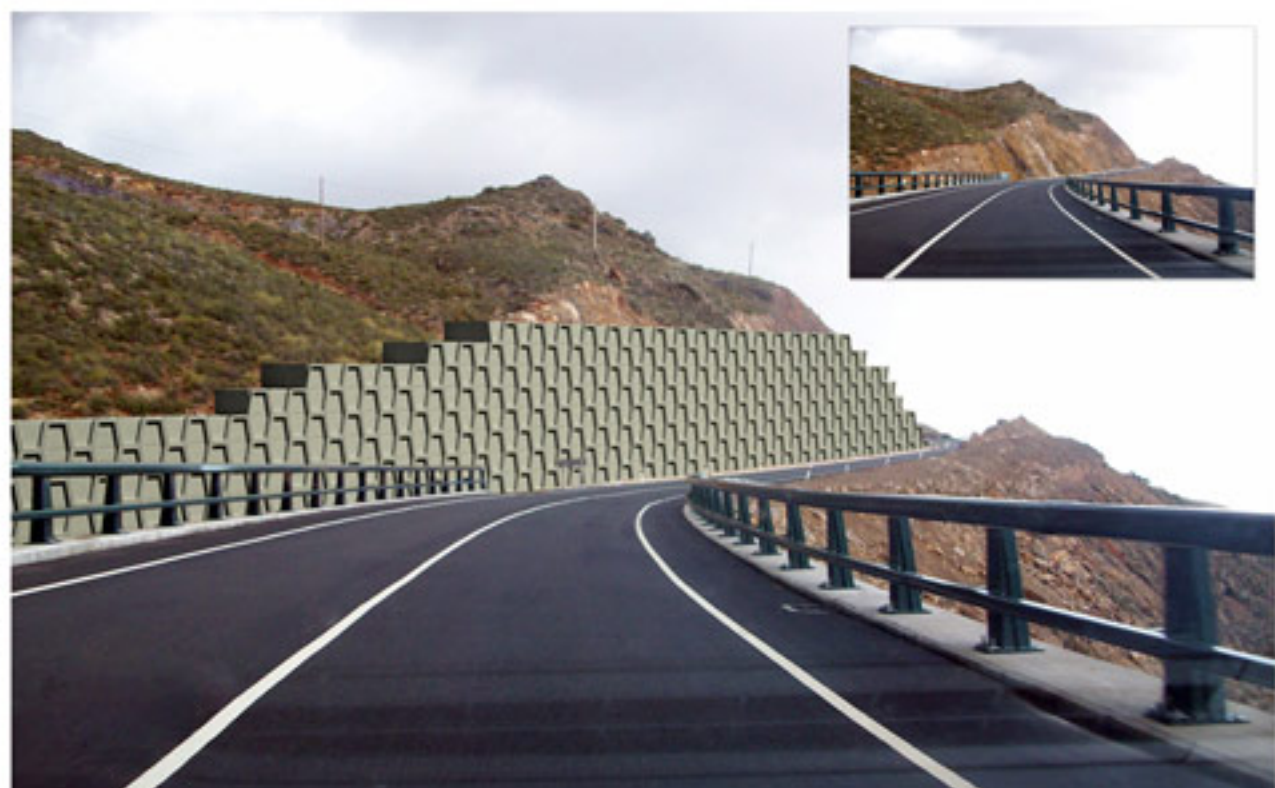
In situ solutions finished in concrete have unbeatable prizes. Currently, we have available the hexagonal format of 15 cm side (hexatrípeto model) and the rectangular one of 40 cm side.



## CAISSONS WALLS

This solution for civil engineering is highly quick and simple to build. In addition to retain fill sections and embankments, it is also aimed to repair displaced cut sections slopes, which will allow to stabilize it in a few hours.

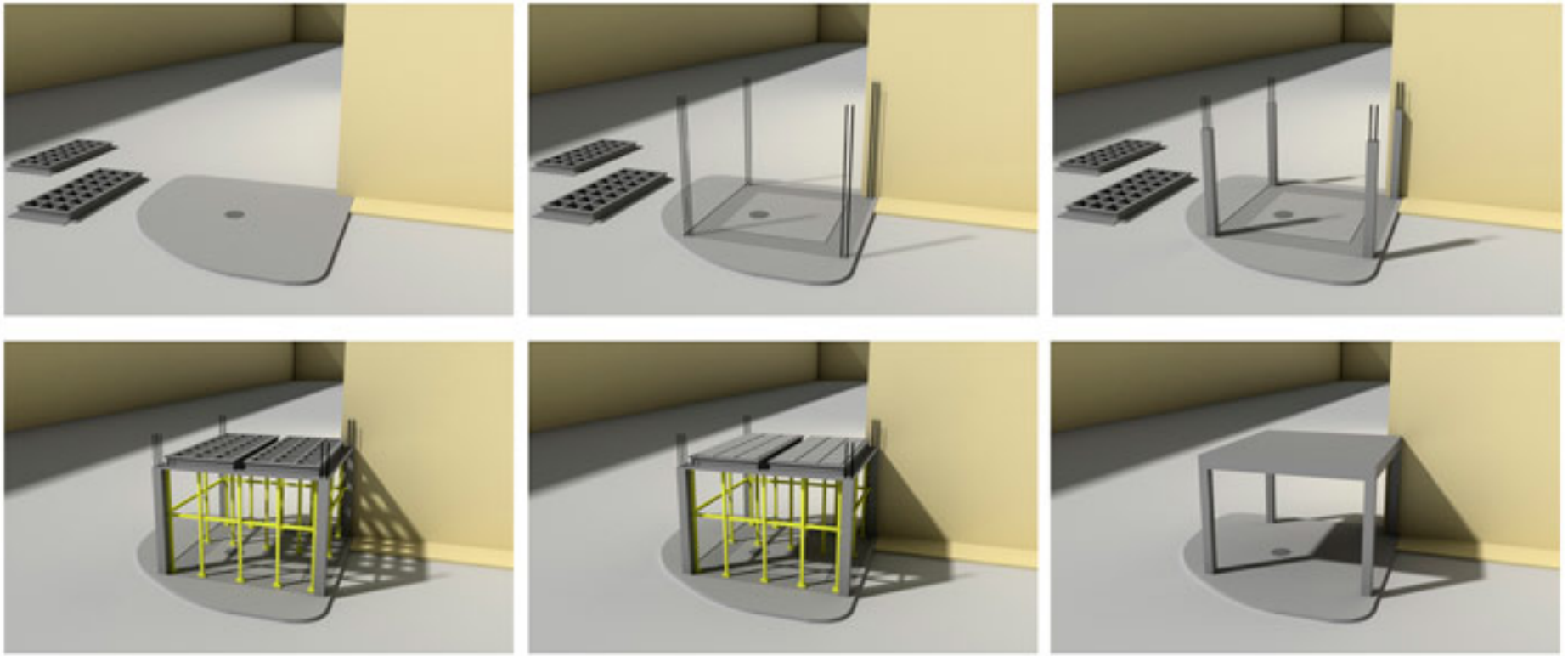
Their unbeatable prize is justified by the optimization of the concrete volume as well as the fill of the caisson with material coming from the own embankment.





# SLABS WITH NO FORMWORK

This solution does **not need the used of formwork to be built**. Each panel acts as formwork and as structure at the same time. It allows both exposed waffle's holes or holes covered by blocks. The traditional, unidirectional, waffle slabs are improved due to its structural operation. This solution allows to get bigger lightened areas and to execute slabs more quickly.





# TADIL SOFTWARE, (TECHNIQUES FOR THE AUTOMATIC DESIGN OF LINEAR INFRASTRUCTURES)

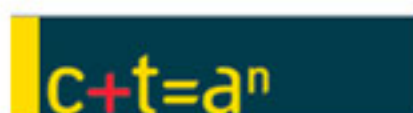
Available since **July 2013**, it will allow a quick check on solutions about roads and railways design. It will also obtain the plan axis with the design of embankments and cut sections, the longitudinal profile, the cross section, the budget and the feasibility study as well as a comparative analysis among the alternatives. With this software, you will be able to make quick calculations or implement all the information in the GIS (Geotechnics, Environment, Planning, Climatology, etc.). In addition, it will obtain the earthwork balance.

The software aims at Governmental administrations and consultancy to make previous and informative studies, being able to obtain conclusions very quickly.



# ACTISA

ACTISA OPENS A WORLD FULL OF POSSIBILITIES.  
DEVELOP YOUR COMPANY, START A NEW ERA.  
INNOVATE WITH ACTISA.



Corporación Tecnológica  
de Andalucía



Agencia de Innovación y Desarrollo de Andalucía IDEA  
CONSEJERÍA DE ECONOMÍA, INNOVACIÓN Y CIENCIA



Universidad de Granada



UNIVERSIDAD  
DE MÁLAGA

c/ Manuel Roldan Prieto 3 2ºF · 18140 La Zubia GRANADA (ESPAÑA)  
Telf. y Fax: 958 389 274

[www.actisa.net](http://www.actisa.net)

[actisa@actisa.net](mailto:actisa@actisa.net)