



THE SOLAR TILE & THE INTELLIGENT SOLAR TILE

太阳能瓦和智能型太阳能瓷砖



TECHNICAL CONSULTANCY ACTIVITIES, RESEARCH
AND ADVANCED SERVICES S.L.

baldosasolar.actisa.net

SOLAR TILE

The solar tile gives a qualitative leap towards the traditional concept of pavement as they are able to provide additional qualities to those of floor and aesthetic.

APPLICATIONS

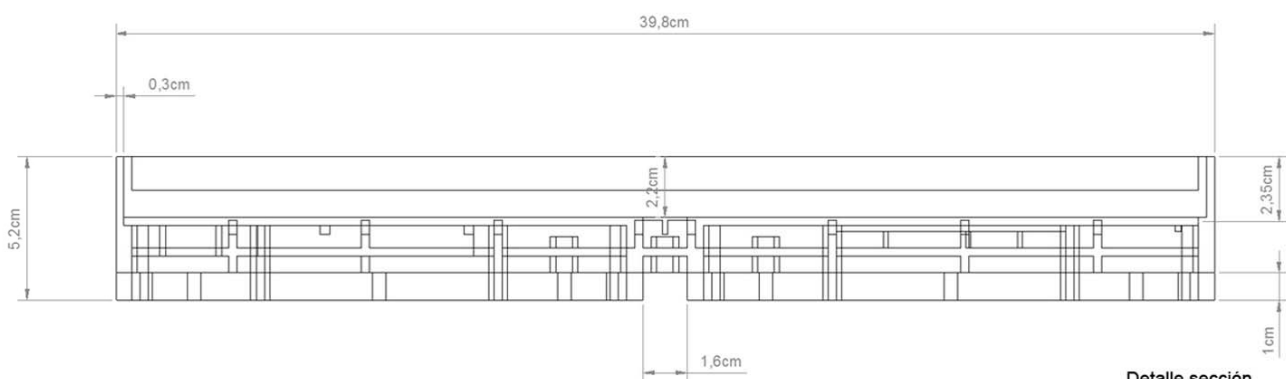
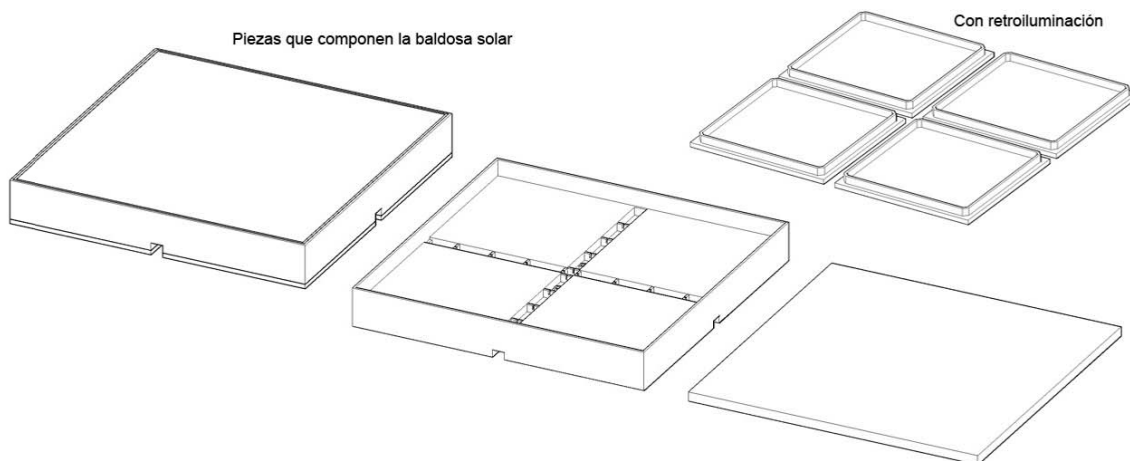
- Illumination from floor working as signaling.
- Illumination from floor working as decorative elements.
- Power-generating solutions for public lighting.
- Supply to other urban elements as advertising panel or MUPI.
- Supply to station of charger for electric cars.
- Supply to telecommunication equipments such as Wi-Fi, Bluetooth, RDFI, etc.
- Supply for domestic use.



Imagen real



Imagen real



Detalle sección

SOLAR TILE

The location of a solar module in the pavement may be less effective than in other locations due to horizontality and dirtiness effects. However, the proximity to the supply point, the autonomy of the net and the use of pavers as a support base have advantages that make the solar tile a useful, feasible and essential element for the modern concept of urban environment.

The solar tile is a milestone for the new concept of modern city, generating new services never imagined for the user. These services are very helpful for the user's daily life.



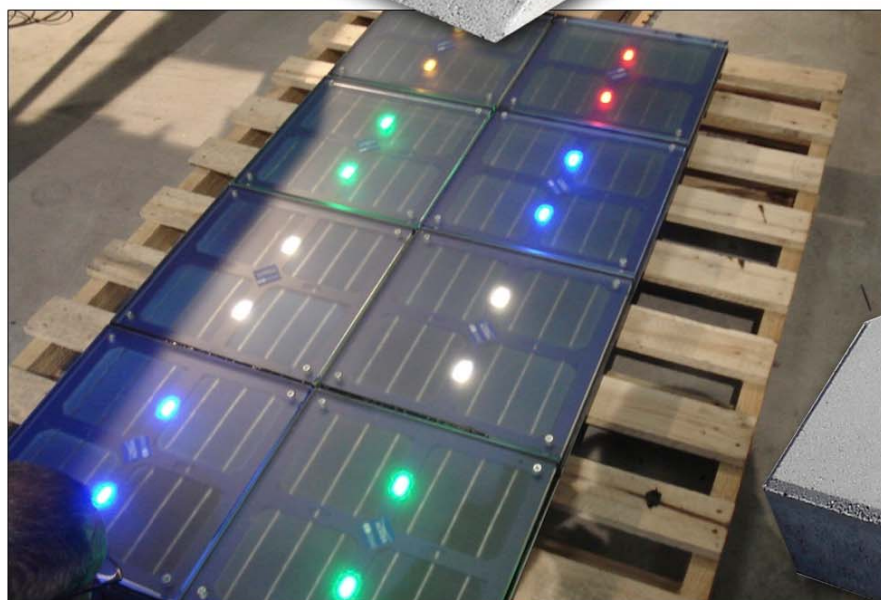
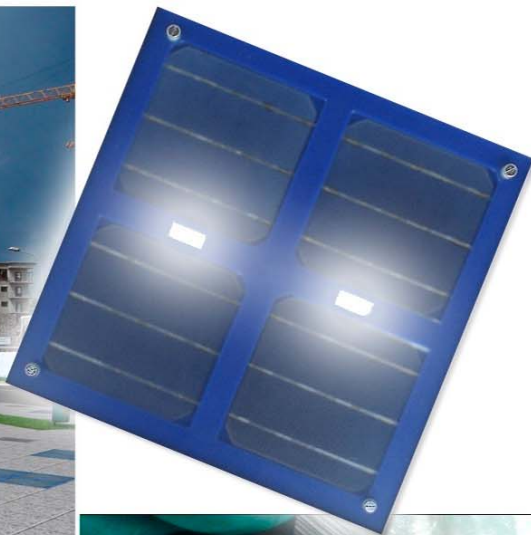
The manufacture of solar tiles with materials suitable for their deployment in pavement, with resistance for heavy traffic and valid slipperiness for pedestrian... all these features turn the solar tile into elements of great interest for urban areas.

SOLAR TILE

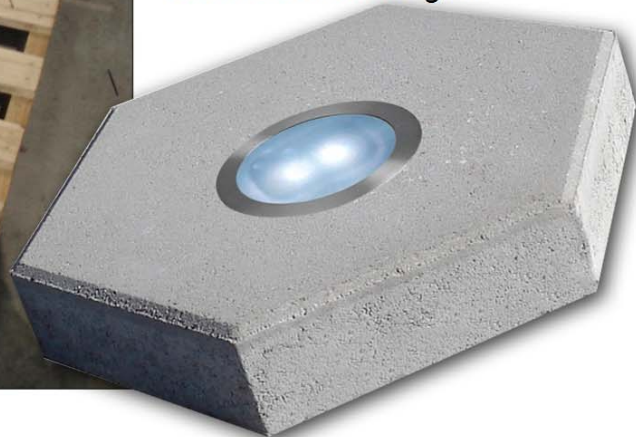
太阳能砖

We got it! These tiles can be used in urban or in-house environment. This solution provides a striking innovation with respect to traditional pavements.

Nightly light from floor can be implemented in our solar tiles.

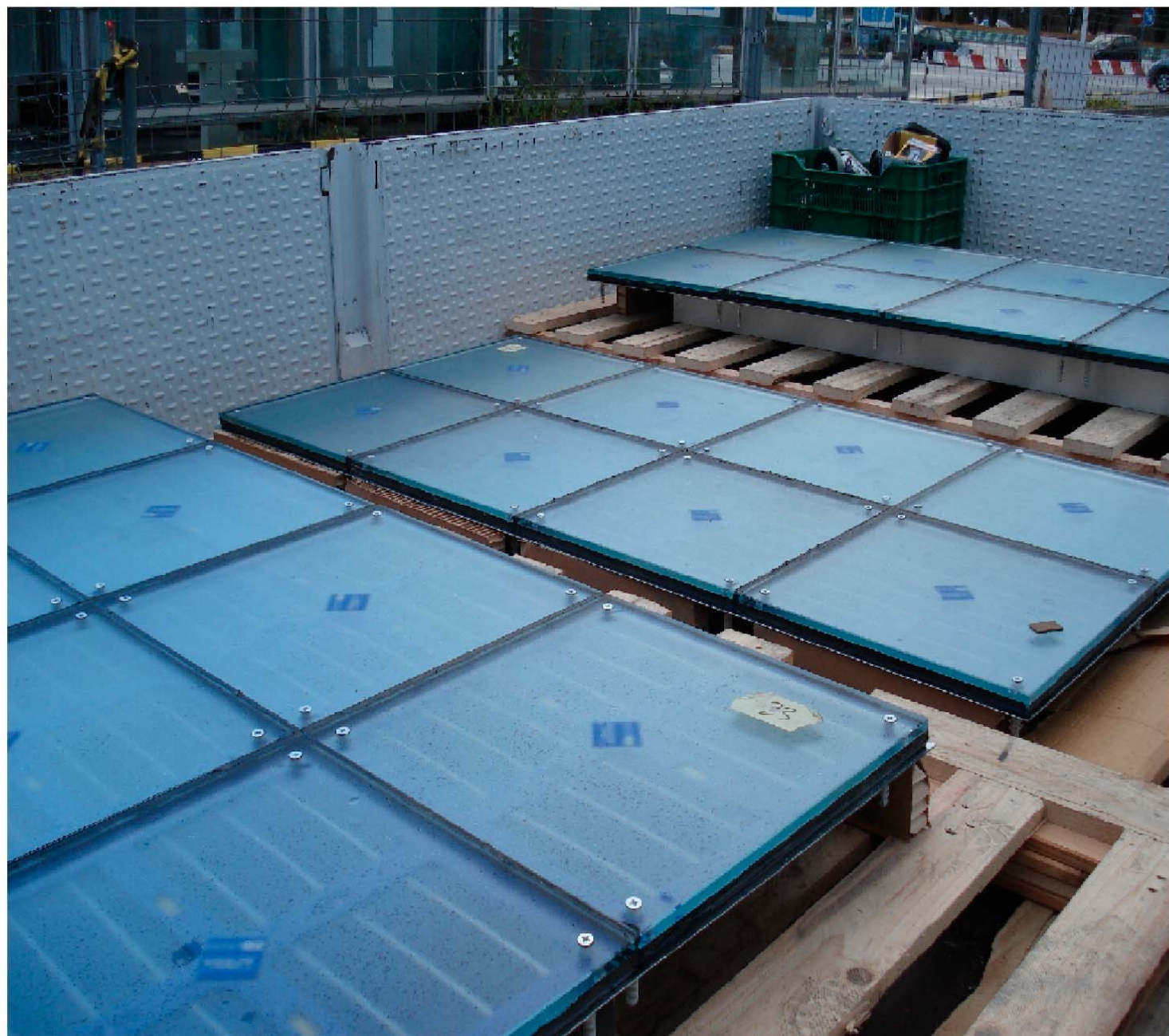


Our square 40 cm side solar tile allows converting a conventional pavement into an active energetic element, being valid for urban lights, house power consumption or connection to the grid.



Customized solutions tailored to the urban space

解决方案来衡量城市空间



EASY INSTALLATION

安装方便

The design of the solar tile allows its easy and fast installation on the pavement.

Different associations of solar tiles can be provided, as for instance 4x2 solar tiles, 2x2, etc.

The basement that supports the group of solar tiles must include a drainage.

SOLAR TILE

太阳能砖



**WE ANTICIPATE AND PROVIDE
A NEW CONCEPT FOR THE
SMART CITY**

我们期待并为智慧城市的一个新概念

INTELLIGENT SOLAR TILE

智能型太阳能砖



Its use with VVOS and CADIOP software allows the creation of virtual spaces.



VVOS
VIRTUAL VISION ON SITE

The tile allows amplifying the WiFi signals' range.



UNIÓN EUROPEA

FONDO EUROPEO DE DESARROLLO REGIONAL

UNA MANERA DE HACER EUROPA



ACTISA OPENS A WORLD OF POSSIBILITIES TO YOU. DEVELOP YOUR
COMPANY. PLACE IT IN A NEW ERA. INNOVATE FROM ACTISA'S
HAND.



Corporación Tecnológica
de Andalucía



Agencia de Innovación y Desarrollo de Andalucía IDEA
CONSEJERÍA DE ECONOMÍA, INNOVACIÓN Y CIENCIA



Universidad de Granada



UNIVERSIDAD
DE MÁLAGA

c/ Manuel Roldan Prieto 3 2ºF · 18140 La Zubia GRANADA (ESPAÑA)
Telf. y Fax: 958 389 274

www.actisa.net

actisa@actisa.net